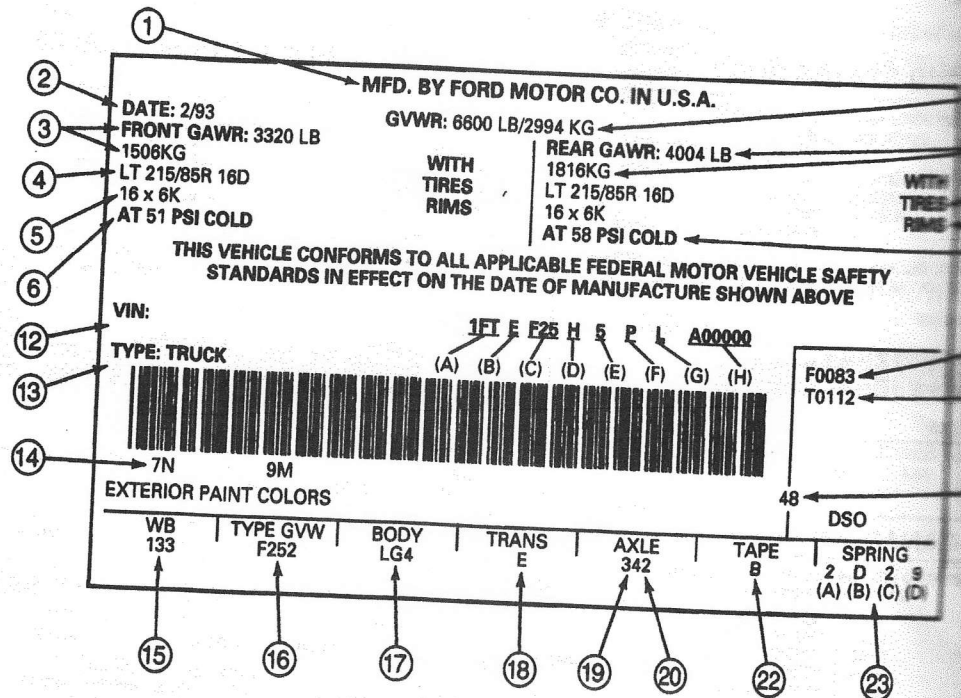


## DESCRIPTION AND OPERATION (Continued)

## Certification Label Codes



- ① NAME AND LOCATION OF MANUFACTURER
- ② DATE OF MANUFACTURE
- ③ FRONT GROSS AXLE WEIGHT RATINGS IN POUNDS (LB) AND KILOGRAMS (KG)
- ④ FRONT TIRE SIZE
- ⑤ RIM SIZE
- ⑥ FRONT TIRE COLD PSI
- ⑦ GROSS VEHICLE WEIGHT RATING IN POUNDS (LB) AND KILOGRAMS (KG)
- ⑧ REAR GROSS AXLE WEIGHT RATING IN POUNDS (LB) AND KILOGRAMS (KG)
- ⑨ REAR TIRE SIZE
- ⑩ RIM SIZE
- ⑪ REAR TIRE COLD PSI

- ⑫ VEHICLE IDENTIFICATION NUMBER
  - (A) WORLD MANUFACTURER IDENTIFIER
  - (B) BRAKE SYSTEM AND GROSS VEHICLE WEIGHT RATING (GVWR) CLASS FOR FORD COMPLETED TRUCKS AND MPV'S. FOR BUSES AND INCOMPLETE VEHICLES, THE FOURTH DIGIT DETERMINES THE BRAKE SYSTEM (ONLY).
  - (C) MODEL OR LINE, SERIES, CHASSIS, CAB OR BODY TYPE
  - (D) ENGINE TYPE
  - (E) CHECK DIGIT
  - (F) MODEL YEAR (FORD-COMPLETED TRUCKS AND MPV'S)
  - (G) ASSEMBLY PLANT CODE
  - (H) SEQUENCE NUMBER
- ⑬ VEHICLE TYPE
- ⑭ EXTERIOR PAINT CODES (TWO SETS OF FIGURES DESIGNATES A TWO-TONE)
- ⑮ WHEELBASE IN INCHES

- ⑯ MODEL CODE AND ENGINE TYPE
- ⑰ INTERIOR TRIM, SEAT TYPE
- ⑱ TRANSMISSION CODE
- ⑲ REAR AXLE CODE
- ⑳ FRONT AXLE CODE
- ㉑ DISTRICT/SPECIAL ORDER CODE
- ㉒ EXTERNAL BODY TAPE CODE
- ㉓ SUSPENSION, IDENTIFICATION CODE
  - (A) AUX./OPT. USAGE CODE
  - (B) FRONT SPRING CODE
  - (C) AUX./OPT. USAGE CODE
  - (D) REAR SPRING CODE
- ㉔ FRONT AXLE ACCESSORY CAPACITY IN POUNDS
- ㉕ TOTAL ACCESSORY CAPACITY IN POUNDS



FPS-1