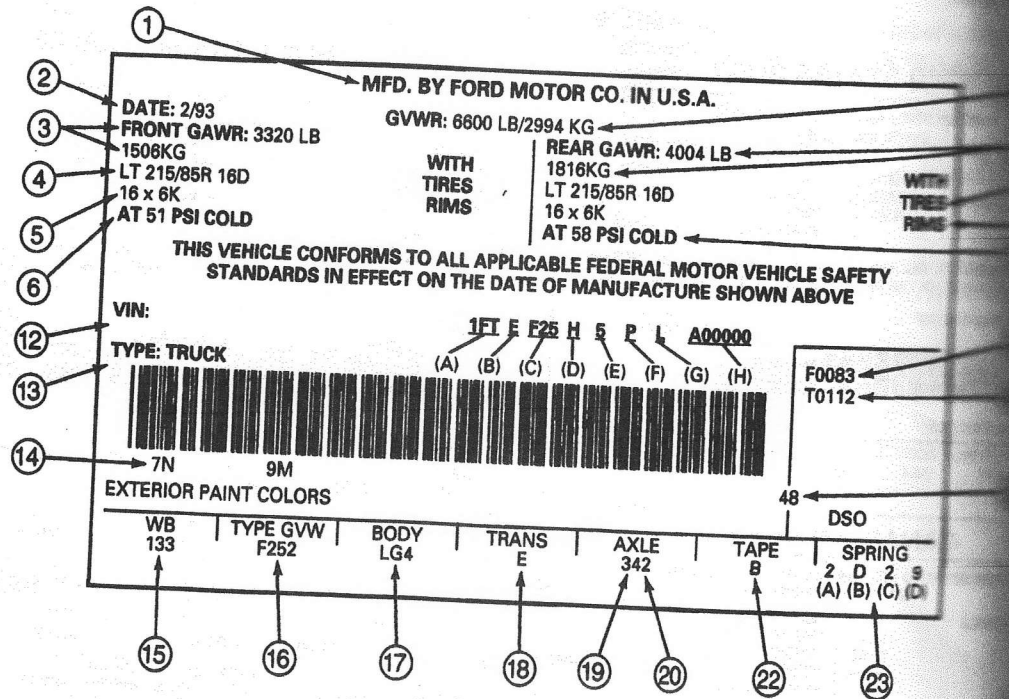


DESCRIPTION AND OPERATION (Continued)

Certification Label Codes



- ① NAME AND LOCATION OF MANUFACTURER
- ② DATE OF MANUFACTURE
- ③ FRONT GROSS AXLE WEIGHT RATINGS IN POUNDS (LB) AND KILOGRAMS (KG)
- ④ FRONT TIRE SIZE
- ⑤ RIM SIZE
- ⑥ FRONT TIRE COLD PSI
- ⑦ GROSS VEHICLE WEIGHT RATING IN POUNDS (LB) AND KILOGRAMS (KG)
- ⑧ REAR GROSS AXLE WEIGHT RATING IN POUNDS (LB) AND KILOGRAMS (KG)
- ⑨ REAR TIRE SIZE
- ⑩ RIM SIZE
- ⑪ REAR TIRE COLD PSI

- ⑫ VEHICLE IDENTIFICATION NUMBER
(A) WORLD MANUFACTURER IDENTIFIER
(B) BRAKE SYSTEM AND GROSS VEHICLE WEIGHT RATING (GVWR) CLASS FOR FORD COMPLETED TRUCKS AND MPV'S. FOR BUSES AND INCOMPLETE VEHICLES, THE FOURTH DIGIT DETERMINES THE BRAKE SYSTEM (ONLY).
(C) MODEL OR LINE, SERIES, CHASSIS, CAB OR BODY TYPE
(D) ENGINE TYPE
(E) CHECK DIGIT
(F) MODEL YEAR (FORD-COMPLETED TRUCKS AND MPV'S)
(G) ASSEMBLY PLANT CODE
(H) SEQUENCE NUMBER
- ⑬ VEHICLE TYPE
- ⑭ EXTERIOR PAINT CODES (TWO SETS OF FIGURES DESIGNATES A TWO-TONE)
- ⑮ WHEELBASE IN INCHES

- ⑯ MODEL CODE AND ENGINE TYPE
- ⑰ INTERIOR TRIM, SEAT TYPE
- ⑱ TRANSMISSION CODE
- ⑲ REAR AXLE CODE
- ⑳ FRONT AXLE CODE
- ㉑ DISTRICT/SPECIAL ORDER
- ㉒ EXTERNAL BODY TAPE
- ㉓ SUSPENSION, IDENTIFICATION
(A) AUX./OPT. USAGE
(B) FRONT SPRING CODE
(C) AUX./OPT. USAGE
(D) REAR SPRING CODE
- ㉔ FRONT AXLE ACCESSORY CAPACITY IN POUNDS
- ㉕ TOTAL ACCESSORY REAR CAPACITY IN POUNDS



FPS-1